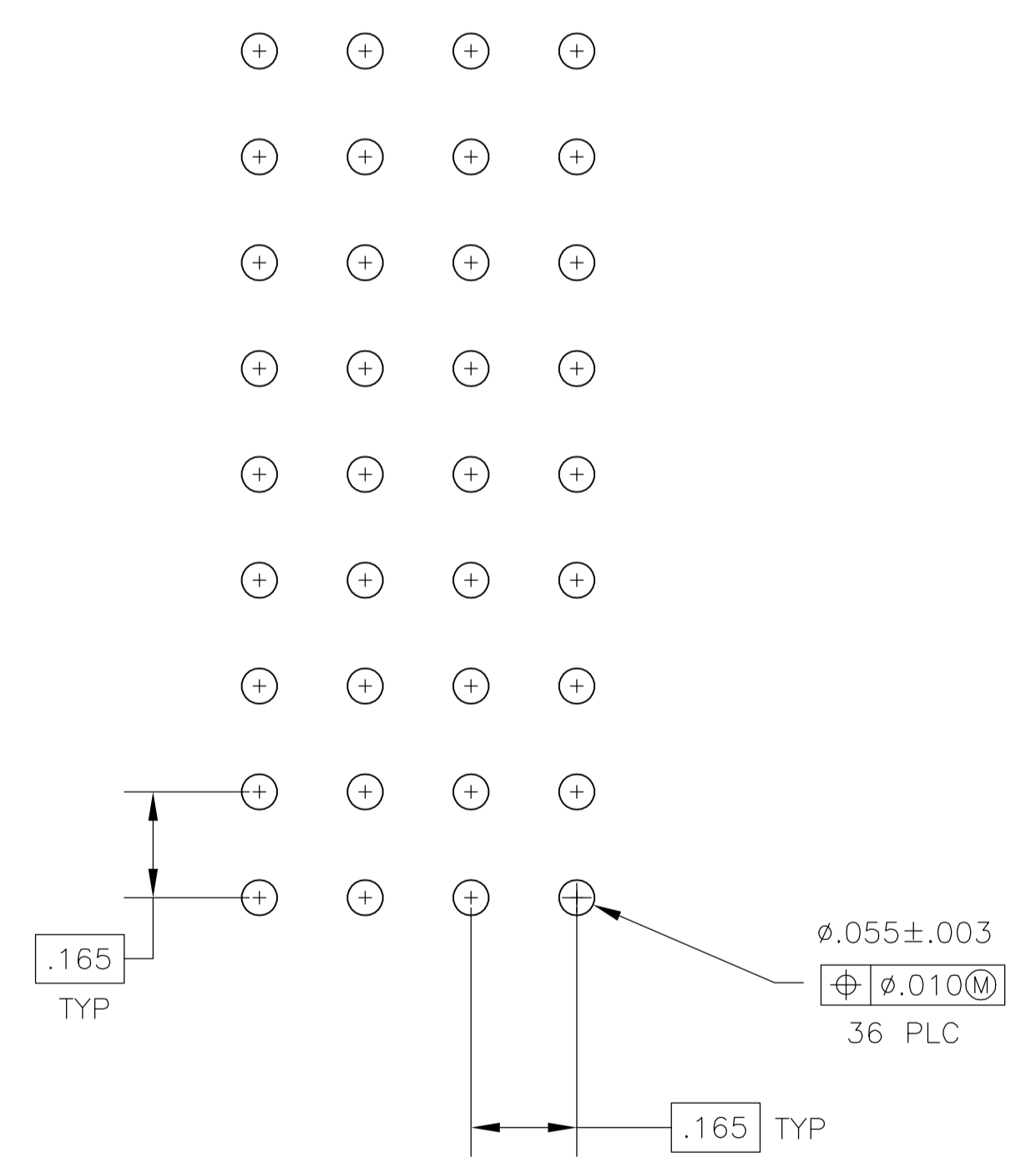
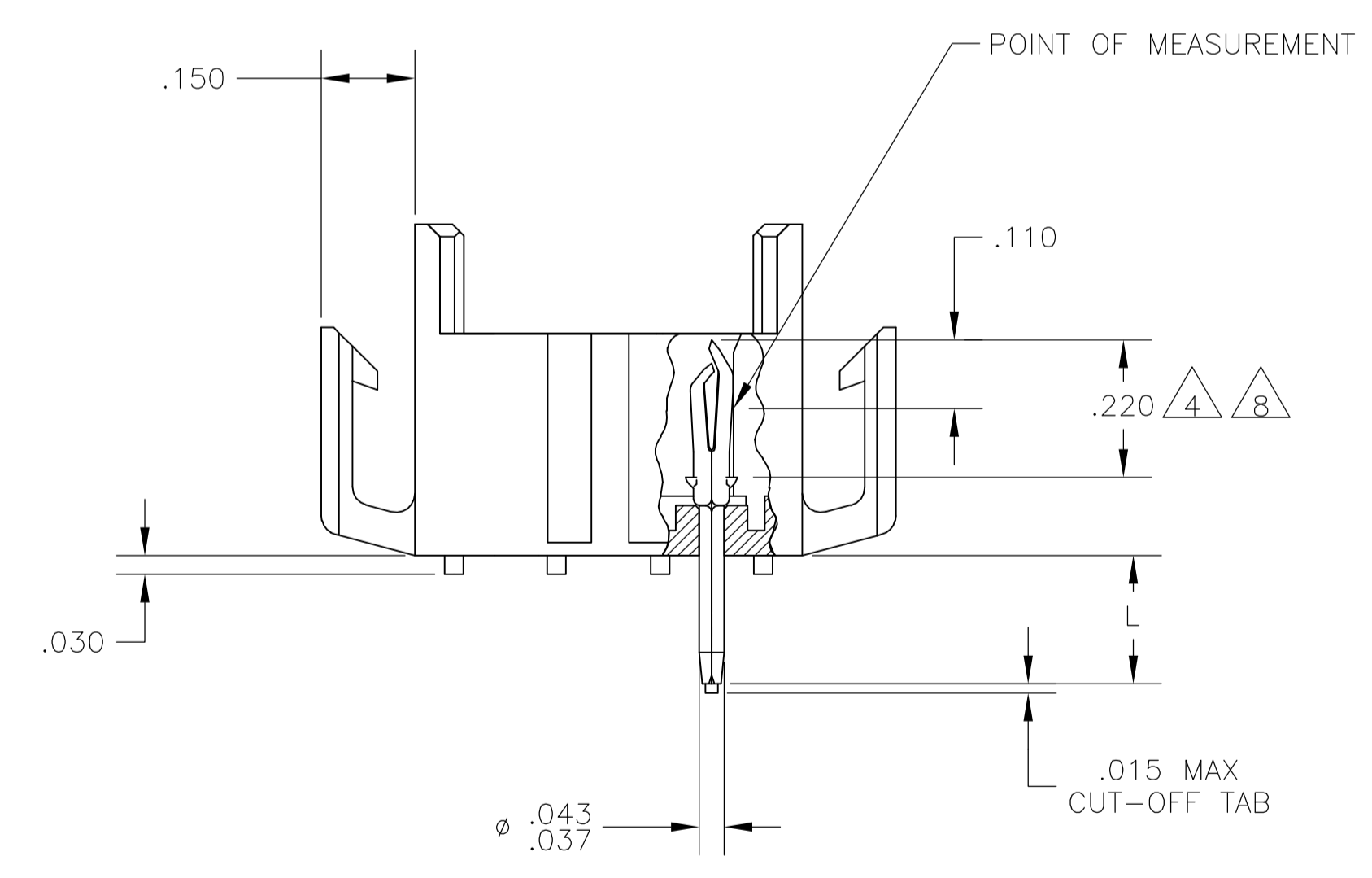


1. FITS SOCKET HOUSING 640526.
2. ASSEMBLY CONFORMS TO AMP SOLDERABILITY SPEC. 109-11-3.
3. FOR USE WITH .063 THICK P.C. BOARD.
4. CONTACT IS PLATED OVERALL WITH .000050 NICKEL, THEN .000030 GOLD OVER CONTACT LENGTH INDICATED AND .000150 MATTE TIN-LEAD ON SOLDER TAIL END.
5. UL AND CSA LOGO LOCATED ON THIS SURFACE.
6. FOR USE WITH .120 THICK P.C. BOARD.
7. TRAY PACKAGED VERSION OF 640506-1. PACKAGED 54 PCS. PER TRAY AND 7 TRAYS PER BOX.
8. CONTACT IS PLATED OVERALL WITH .000050 NICKEL, THEN .000030 GOLD OVER CONTACT LENGTH INDICATED AND .000150 MATTE TIN ON SOLDER TAIL END.



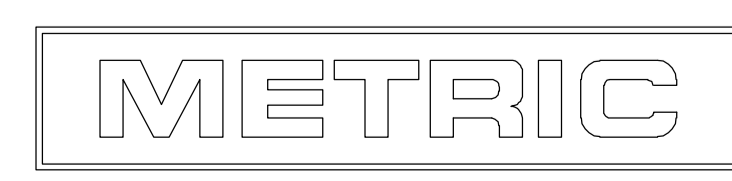
RECOMMENDED P.C. BOARD LAYOUT



.015	0.38	.110	2.79	1.610	40.89
.010	0.25	.063	1.60	.785	19.94
.008	0.20	.055	1.40	.530	13.46
.005	0.13	.043	1.09	.220	5.59
.003	0.08	.037	0.94	.210	5.33
.000050	0.00127	.030	0.76	.165	4.19
.000030	0.00076	.020	0.51	.150	3.81
IN	MM	IN	MM	IN	MM

CONVERSION TABLE

.210	6	BRICK RED	GOLD	8	2-640506-4
.150	3	BRICK RED	GOLD	8	2-640506-2
.150	3	BRICK RED	PRE-TIN		1-640506-0
.210	6	BRICK RED	GOLD	4	640506-4
.210	6	BRICK RED	PRE-TIN		640506-3
.150	3	BRICK RED	GOLD	4	640506-2
.150	3	BRICK RED	PRE-TIN		640506-1
"L" ±.010 -.020		HOUSING COLOR	PIN FINISH		PART NUMBER



THIS DRAWING IS A CONTROLLED DOCUMENT.

DIMENSIONS: INCHES	TOLERANCES UNLESS OTHERWISE SPECIFIED:	DWN	J. HUFFMAN	28 APR 98		Tyco Electronics Corporation Harrisburg, PA 17105-3608
0 PLC ± -	1 PLC ± -	CHK	R. SWING	28 APR 98		NAME
2 PLC ± -	3 PLC ± .005	APVD	T. REDDICK	28 APR 98	PRODUCT SPEC	
4 PLC ± -	ANGLES ± 0° 30'	APPLICATION SPEC			SIZE	A1
MATERIAL: HOUSING FLAME RETARDANT BRONZE, UL 94V-0, PIN, .008 PH BRZ.	FINISH: SEE FINISH	WEIGHT			SCALE	4:1
		CUSTOMER DRAWING			DRAWING NO	00779
					RESTRICTED TO	